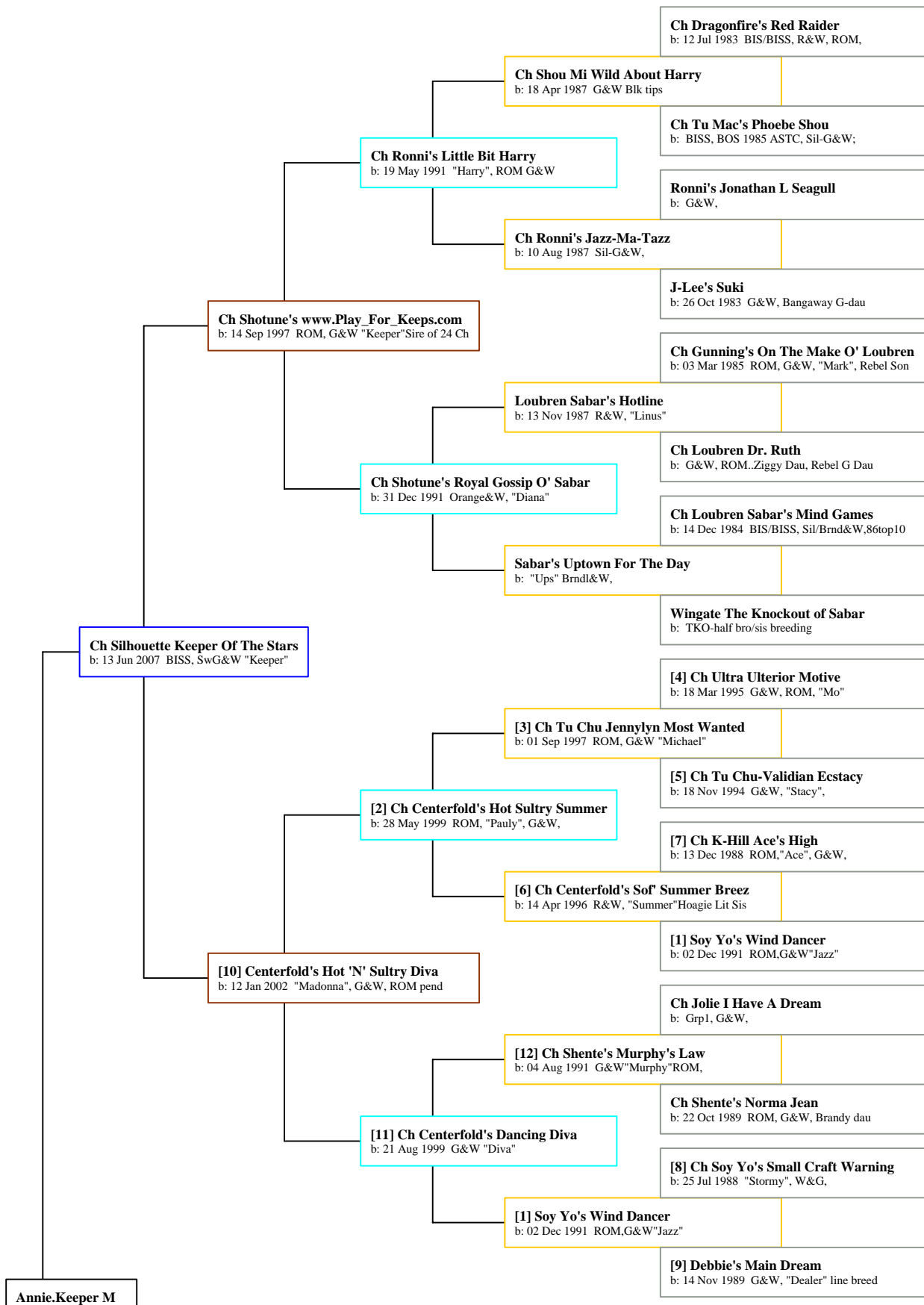


Ancestors of Annie. Keeper M



Annie.Keeper M
b: 12 May 2011 G&W

b: 14 Nov 1989 G&W, "Dealer" line breed

[4] Ch Ultra Superior Motive
b: 18 Mar 1995 G&W, ROM, "Mo"

[3] Ch Tu Chu Jennylyn Most Wanted
b: 01 Sep 1997 ROM, G&W "Michael"

[5] Ch Tu Chu-Validian Ecstasy
b: 18 Nov 1994 G&W, "Stacy",

[2] Ch Centerfold's Hot Sultry Summer
b: 28 May 1999 ROM, "Pauly", G&W,

[7] Ch K-Hill Ace's High
b: 13 Dec 1988 ROM, "Ace", G&W,

[6] Ch Centerfold's Sof' Summer Breez
b: 14 Apr 1996 R&W, "Summer" Hoagie Lit Sis

[1] Soy Yo's Wind Dancer
b: 02 Dec 1991 ROM, G&W "Jazz"

Centerfold's Silhouette Encore
b: 25 Sep 2006 G&W "Cory" #2 class 07 Nat'l

Ch Centerfold's Dreams of Zorro
b: 08 Dec 1997 dkG&W, Can ROM "Tony"

Centerfold's Dreams in Red ST.
b: 23 May 2000 Bright R&W "Sammy" (Porter's Bro)

Centerfold's Goodi Gumdrops
b: 22 Jan 1997 ROM, Mah&W "Candy"

Centerfold's All About Brandi
b: G&W "Brandi"

Ch Shente's Christian Dior
b: 08 Jun 1985 G&W, ROM, BIS/BISS "Christian"

Showtime's Christina
b: 12 May 1994 G&W

Ch Silhouette's Afternoon Delight
b: 15 Feb 2008 "Annie" G&W

Ch Showtime's Alexandra The Great
b: 16 Oct 1991 G&W "Alexandra"

Ch Chang Tang's Elusive Jeffrey
b: 25 Feb 1986 BIS "Jeffrey" G&W, ROM,

[7] Ch K-Hill Ace's High
b: 13 Dec 1988 ROM, "Ace", G&W,

Ch Centerfold's High On Stardust
b: 14 Apr 1996 G&W "Hoagie"

Can Ch Ahn Wei Electric Lady Ashlee
b: 09 May 1987 ROM, G&W, "Ashlee"

[8] Ch Soy Yo's Small Craft Warning
b: 25 Jul 1988 "Stormy", W&G,

[1] Soy Yo's Wind Dancer
b: 02 Dec 1991 ROM, G&W "Jazz"

Centerfold's Silhouette Allure
b: 15 Aug 2004 "Allie" G&W, pointed

[9] Debbie's Main Dream
b: 14 Nov 1989 G&W, "Dealer" line breed

[3] Ch Tu Chu Jennylyn Most Wanted
b: 01 Sep 1997 ROM, G&W "Michael"

[2] Ch Centerfold's Hot Sultry Summer
b: 28 May 1999 ROM, "Pauly", G&W,

[6] Ch Centerfold's Sof' Summer Breez
b: 14 Apr 1996 R&W, "Summer" Hoagie Lit Sis

[10] Centerfold's Hot 'N' Sultry Diva
b: 12 Jan 2002 "Madonna", G&W, ROM pend

[12] Ch Shente's Murphy's Law
b: 04 Aug 1991 G&W "Murphy" ROM,

[11] Ch Centerfold's Dancing Diva
b: 21 Aug 1999 G&W "Diva"

[1] Soy Yo's Wind Dancer
b: 02 Dec 1991 ROM, G&W "Jazz"