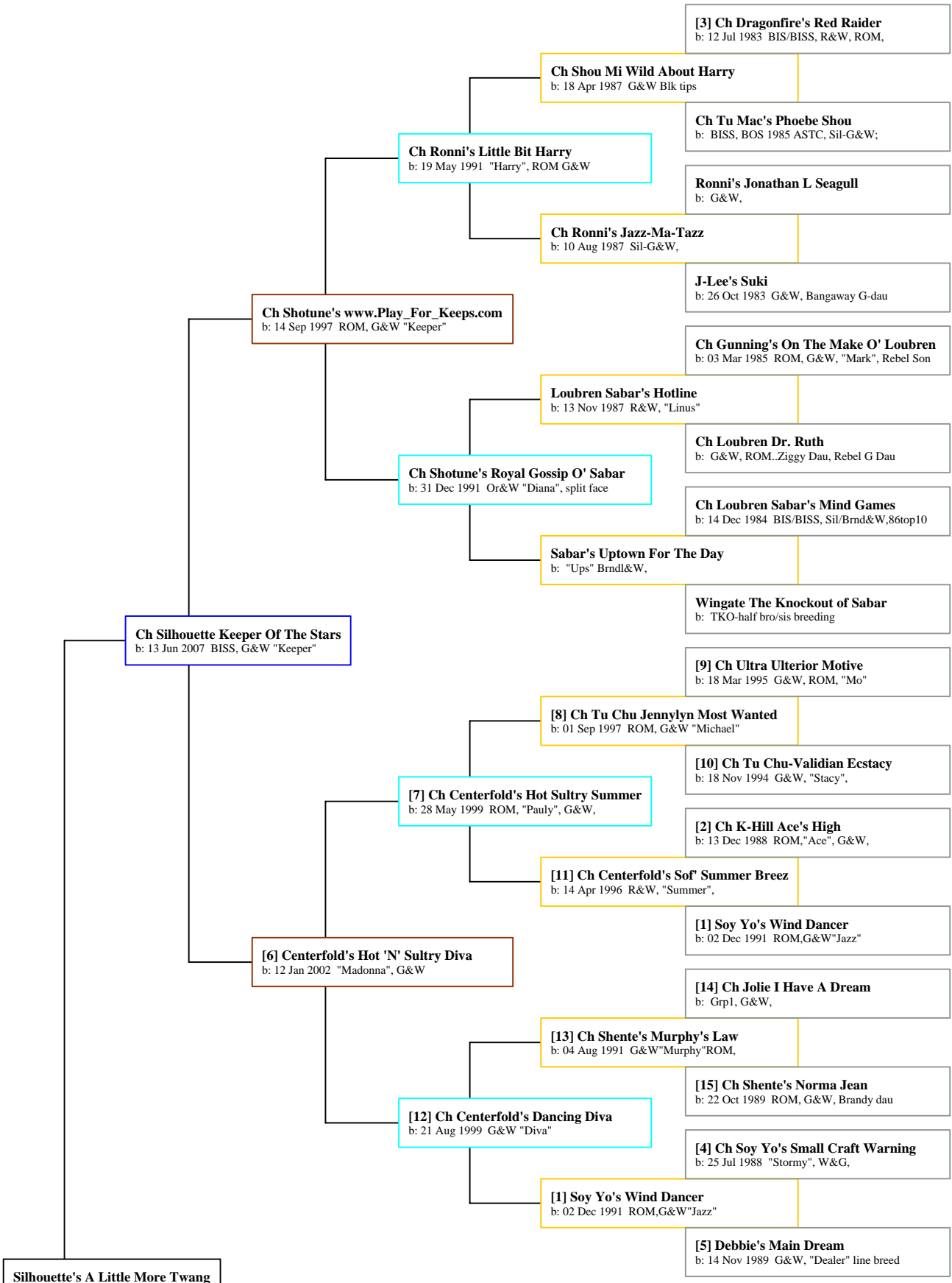


Ancestors of Silhouette's A Little More Twang



Silhouette's A Little More Twang
b: 23 Oct 2009 G&W "Juice"

b: 14 Nov 1989 G&W, "Dealer" line breed

[3] Ch Dragonfire's Red Raider
b: 12 Jul 1983 BIS/BISS, R&W, ROM,

Ch Chang Tang's Elusive Jeffrey
b: 25 Feb 1986 BIS"Jeffrey"G&W,ROM,

Elusive Pate O'Chang Tang
b: 29 Aug 1984 Liv&W, Lordy girl

[2] Ch K-Hill Ace's High
b: 13 Dec 1988 ROM,"Ace", G&W,

Regal's Elusive Rum Fizz
b: 23 Oct 1985 G&W, Doolittle/Ziggy

Can Ch Ahn Wei Electric Lady Ashlee
b: 09 May 1987 ROM, G&W,"Ashlee"

Anh Wei The Electronic Boom
b: 18 Aug 1982 G&W, 007/CharNick/Spunky lines

Ch Centerfold's High On Stardust
b: 14 Apr 1996 G&W "Hoagie"

Heatherwood's Bangaway Jr.
b: 20 Mar 1981 ROM,G&Wneeded 1 major

[4] Ch Soy Yo's Small Craft Warning
b: 25 Jul 1988 "Stormy", W&G,

Ch J-Mor's Autumn Color
b: 24 Apr 1984 G&W,old BelAir/Parquins

[1] Soy Yo's Wind Dancer
b: 02 Dec 1991 ROM,G&W"Jazz"

Ch Heatherwood's Fifth Wheel
b: 30 Jul 1980 ROM,G&W"Wheeler"

[5] Debbie's Main Dream
b: 14 Nov 1989 G&W, "Dealer" line breed

Hun-Nee Of Bri-Lou-Pau
b: 26 Nov 1987 B/W&G, Wheeler x Ant/Sw Imp

Centerfold's Silhouette Allure
b: 15 Aug 2004 "Allie" G&W

[9] Ch Ultra Ulterior Motive
b: 18 Mar 1995 G&W, ROM, "Mo"

[8] Ch Tu Chu Jennylyn Most Wanted
b: 01 Sep 1997 ROM, G&W "Michael"

[10] Ch Tu Chu-Validian Ecstasy
b: 18 Nov 1994 G&W, "Stacy",

[7] Ch Centerfold's Hot Sultry Summer
b: 28 May 1999 ROM, "Pauly", G&W,

[2] Ch K-Hill Ace's High
b: 13 Dec 1988 ROM,"Ace", G&W,

[11] Ch Centerfold's Sof' Summer Breez
b: 14 Apr 1996 R&W, "Summer",

[1] Soy Yo's Wind Dancer
b: 02 Dec 1991 ROM,G&W"Jazz"

[6] Centerfold's Hot 'N' Sultry Diva
b: 12 Jan 2002 "Madonna", G&W

[14] Ch Jolie I Have A Dream
b: Grp1, G&W,

[13] Ch Shente's Murphy's Law
b: 04 Aug 1991 G&W"Murphy"ROM,

[15] Ch Shente's Norma Jean
b: 22 Oct 1989 ROM, G&W, Brandy dau

[12] Ch Centerfold's Dancing Diva
b: 21 Aug 1999 G&W "Diva"

[4] Ch Soy Yo's Small Craft Warning
b: 25 Jul 1988 "Stormy", W&G,

[1] Soy Yo's Wind Dancer
b: 02 Dec 1991 ROM,G&W"Jazz"

[5] Debbie's Main Dream
b: 14 Nov 1989 G&W, "Dealer" line breed