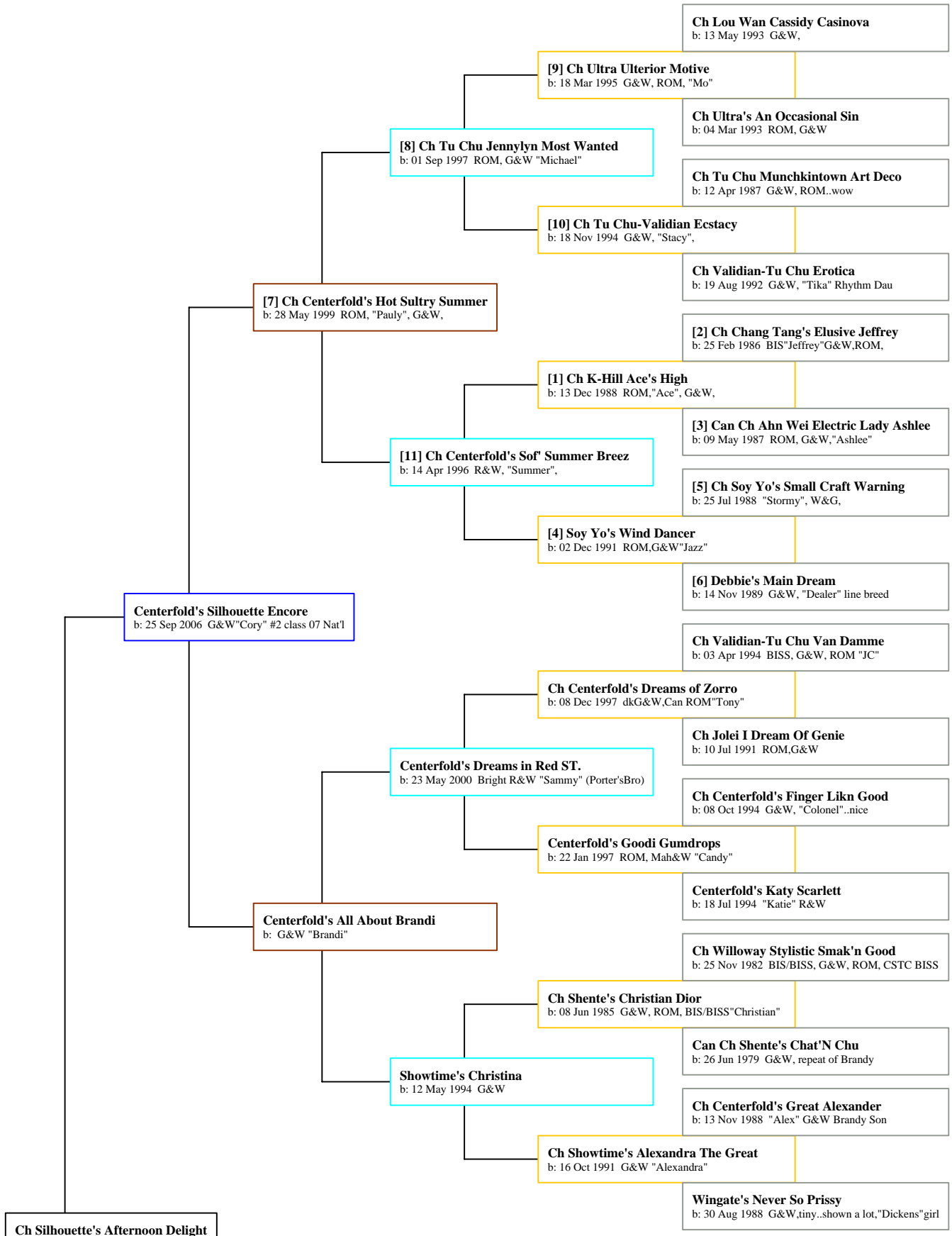


## Ancestors of Ch Silhouette's Afternoon Delight



Ch Silhouette's Afternoon Delight

**Ch Silhouette's Afternoon Delight**  
b: 15 Feb 2008 "Annie" G&W

b: 30 Aug 1988 G&W,tiny...shown a lot,"Dickens" girl

**Ch Dragonfire's Red Raider**  
b: 12 Jul 1983 BIS/BISS, R&W, ROM,

**[2] Ch Chang Tang's Elusive Jeffrey**  
b: 25 Feb 1986 BIS"Jeffrey"G&W,ROM,

**Elusive Pate O'Chang Tang**  
b: 29 Aug 1984 Liv&W, Lordy girl

**[1] Ch K-Hill Ace's High**  
b: 13 Dec 1988 ROM,"Ace", G&W,

**Regal's Elusive Rum Fizz**  
b: 23 Oct 1985 G&W, Doolittle/Ziggy

**[3] Can Ch Ahn Wei Electric Lady Ashlee**  
b: 09 May 1987 ROM, G&W,"Ashlee"

**Anh Wei The Electronic Boom**  
b: 18 Aug 1982 G&W, 007/CharNick/Spunky lines

**Ch Centerfold's High On Stardust**  
b: 14 Apr 1996 G&W "Hoagie"

**Heatherwood's Bangaway Jr.**  
b: 20 Mar 1981 ROM,G&Wneeded 1 major

**[5] Ch Soy Yo's Small Craft Warning**  
b: 25 Jul 1988 "Stormy", W&G,

**Ch J-Mor's Autumn Color**  
b: 24 Apr 1984 G&W,old BelAir/Parquins

**[4] Soy Yo's Wind Dancer**  
b: 02 Dec 1991 ROM,G&W"Jazz"

**Ch Heatherwood's Fifth Wheel**  
b: 30 Jul 1980 ROM,G&W"Wheeler"

**[6] Debbie's Main Dream**  
b: 14 Nov 1989 G&W, "Dealer" line breed

**Hun-Nee Of Bri-Lou-Pau**  
b: 26 Nov 1987 B/W&G, Wheeler x Ant/Sw Imp

**Centerfold's Silhouette Allure**  
b: 15 Aug 2004 "Allie" G&W

**[9] Ch Ultra Ulterior Motive**  
b: 18 Mar 1995 G&W, ROM, "Mo"

**[8] Ch Tu Chu Jennylyn Most Wanted**  
b: 01 Sep 1997 ROM, G&W "Michael"

**[10] Ch Tu Chu-Validian Ecstasy**  
b: 18 Nov 1994 G&W, "Stacy",

**[7] Ch Centerfold's Hot Sultry Summer**  
b: 28 May 1999 ROM, "Pauly", G&W,

**[1] Ch K-Hill Ace's High**  
b: 13 Dec 1988 ROM,"Ace", G&W,

**[11] Ch Centerfold's Sof' Summer Breez**  
b: 14 Apr 1996 R&W, "Summer",

**[4] Soy Yo's Wind Dancer**  
b: 02 Dec 1991 ROM,G&W"Jazz"

**Centerfold's Hot 'N' Sultry Diva**  
b: 12 Jan 2002 "Madonna", G&W

**Ch Jolie I Have A Dream**  
b: Grp1, G&W,

**Ch Shente's Murphy's Law**  
b: 04 Aug 1991 G&W"Murphy"ROM,

**Ch Shente's Norma Jean**  
b: 22 Oct 1989 ROM, G&W, Brandy dau

**Ch Centerfold's Dancing Diva**  
b: 21 Aug 1999 G&W "Diva"

**[5] Ch Soy Yo's Small Craft Warning**  
b: 25 Jul 1988 "Stormy", W&G,

**[4] Soy Yo's Wind Dancer**  
b: 02 Dec 1991 ROM,G&W"Jazz"

**[6] Debbie's Main Dream**  
b: 14 Nov 1989 G&W, "Dealer" line breed